



OCTOBER 2019

# K-FLEX<sup>®</sup> PE





# K-FLEX®

## PE

### DESCRIPTION

**K-FLEX® PE** is an extruded polyethylene closed cell insulation tube, available in different diameters and Thick.

Applications

**K-FLEX® PE** is ideal for heat insulation of pipelines of heating systems, cold and hot water supply, ventilation and air conditioning, and equipment.

### TECHNICAL DATA

K-FLEX® PE ▶ TECHNICAL DATA		
Property ▼	Value ▼	Test method ▼
Temperature range	untill +100 °C	EN 14707
Thermal conductivity $\lambda$ W/(m•K)	+10 °C = 0,036 +40 °C = 0,040	EN ISO 8497
Corrosion prevention	ph Neutral (7±0,5)	
Fire rating	Euroclass D <sub>L</sub> -s1, d0	EN 13501-1
Ecological data	Without CFCs and HCFCs	
Density	30 (±7) kg/m <sup>3</sup>	

K-FLEX® reserves the right to change data and technical requirements without notice.



**K-FLEX® PE TUBES**
**Thickness 6 mm**

COPPER PIPE			IRON PIPE		Length 2 metres				
External Ø mm	Nom. Ø DN	Inches	External Ø mm	Nom. Ø DN	Thick. (mm)	Diam. (mm)	Code	m/Ct.	Price €/m
					6	12	060122155PE0N0	-	On request
14/15	10/-	1/4"	13,5	8	6	15	060152155PE0N0	440	0,26
18	15	3/8"	17,2	10	6	18	060182155PE0N0	400	0,29
22	20	1/2"	21,3	15	6	22	060222155PE0N0	320	0,34
					6	25	060252155PE0N0	244	0,39
28	25	3/4"	26,9	20	6	28	060282155PE0N0	240	0,43
35	32	1"	33,7	25	6	35	060352155PE0N0	160	0,53
42	40	1+1/4"	42,4	32	6	42	060422155PE0N0	140	0,62

**Thickness 9 mm**

COPPER PIPE			IRON PIPE		Length 2 metres				
External Ø mm	Nom. Ø DN	Inches	External Ø mm	Nom. Ø DN	Thick. (mm)	Diam. (mm)	Code	m/Ct.	Price €/m
14/15	10/-	1/4"	13,5	8	9	15	090152155PE0N0	356	0,44
18	15	3/8"	17,2	10	9	18	090182155PE0N0	284	0,51
22	20	1/2"	21,3	15	9	22	090222155PE0N0	240	0,55
					9	25	090252155PE0N0	200	0,65
28	25	3/4"	26,9	20	9	28	090282155PE0N0	168	0,72
35	32	1"	33,7	25	9	35	090352155PE0N0	136	0,78
42	40	1+1/4"	42,4	32	9	42	090422155PE0N0	110	1,00
					9	45	090452155PE0N0	94	1,08
		1+1/2"	48,3	40	9	48	090482155PE0N0	74	1,19
54	50		54		9	54	090542155PE0N0	70	1,30
		2"	60,3	50	9	60	090602155PE0N0	66	1,42
64			63,5		9	64	090642155PE0N0	60	1,52
76,1	65	2+1/2"	76,1	65	9	76	090762155PE0N0	48	1,79
88,9	80	3"	88,9	80	9	89	090892155PE0N0	40	2,08
					9	108	091082155PE0N0	26	2,68
114	100	4"	114,3	100	9	114	091142155PE0N0	26	2,74
133	125		133		9	133	091332155PE0N0	16	3,51
159	150		160		9	160	091602155PE0N0	12	4,34

Tolerance for K-FLEX® PE Tubes: Length: - 1,5%

Internal Ø: ≤ 35mm: from +1mm to +4mm, >35mm/≤100mm: from +2mm to +6mm, >100: from +3mm to +8mm

Thickness: 6 mm: ±1 mm, 9 and 13 mm ±1,5 mm, 19 and 25 mm ±2,5 mm, 32, 40 and 50 ±3 mm

All the codes reported in the chart refer to products in Big Cartons packaging, for the Small Carton's codes and information please contact our customer service.

**Self-adhesive**  
version available.  
Contact us  
for more  
information.

**1m length**  
available.  
Contact us  
for more  
information.

K-FLEX® PE TUBES									
Thickness 13 mm									
COPPER PIPE			IRON PIPE			Length 2 metres			
External Ø mm	Nom. Ø DN	Inches	External Ø mm	Nom. Ø DN	Thick. (mm)	Diam. (mm)	Code	m/Ct.	Price €/m
14/15	10/-	1/4"	13,5	8	13	15	130152155PE0N0	240	0,81
18	15	3/8"	17,2	10	13	18	130182155PE0N0	200	0,90
22	20	1/2"	21,3	15	13	22	130222155PE0N0	168	1,02
					13	25	130252155PE0N0	140	1,12
28	25	3/4"	26,9	20	13	28	130282155PE0N0	132	1,21
35	32	1"	33,7	25	13	35	130352155PE0N0	108	1,43
42	40	1+1/4"	42,4	32	13	42	130422155PE0N0	80	1,73
					13	45	130452155PE0N0	72	1,84
		1+1/2"	48,3	40	13	48	130482155PE0N0	70	1,93
54	50		54		13	54	130542155PE0N0	66	2,11
		2"	60,3	50	13	60	130602155PE0N0	48	2,39
64			63,5		13	64	130642155PE0N0	48	2,50
76,1	65	2+1/2"	76,1	65	13	76	130762155PE0N0	40	2,91
88,9	80	3"	88,9	80	13	89	130892155PE0N0	30	3,43
					13	108	131082155PE0N0	22	4,24
114	100	4"	114,3	100	13	114	131142155PE0N0	22	4,36
133	125		133		13	133	131332155PE0N0	16	5,22
159	150		160		13	160	131602155PE0N0	12	6,39
Thickness 20 mm									
COPPER PIPE			IRON PIPE			Length 2 metres			
External Ø mm	Nom. Ø DN	Inches	External Ø mm	Nom. Ø DN	Thick. (mm)	Diam. (mm)	Code	m/Ct.	Price €/m
22	20	1/2"	21,3	15	20	22	200222155PE0N0	108	1,77
					20	25	200252155PE0N0	100	1,89
28	25	3/4"	26,9	20	20	28	200282155PE0N0	88	2,03
35	32	1"	33,7	25	20	35	200352155PE0N0	70	2,36
42	40	1+1/4"	42,4	32	20	42	200422155PE0N0	60	2,67
					20	45	200452155PE0N0	50	2,83
		1+1/2"	48,3	40	20	48	200482155PE0N0	48	2,97
54	50		54		20	54	200542155PE0N0	48	3,20
		2"	60,3	50	20	60	200602155PE0N0	40	3,51
64			63,5		20	64	200642155PE0N0	38	3,69
76,1	65	2+1/2"	76,1	65	20	76	200762155PE0N0	26	4,38
88,9	80	3"	88,9	80	20	89	200892155PE0N0	24	4,93
					20	108	201082155PE0N0	14	6,30
114	100	4"	114,3	100	20	114	201142155PE0N0	14	6,47
133	125		133		20	133	201332155PE0N0	12	7,40
159	150		160		20	160	201602155PE0N0	12	8,41

Tolerance for K-FLEX® PE Tubes: Length: - 1,5%  
 Internal Ø: ≤ 35mm: from +1mm to +4mm, >35mm/≤100mm: from +2mm to +6mm, >100: from +3mm to +8mm  
 Thickness: 6 mm: ±1 mm, 9 and 13 mm ±1,5 mm, 19 and 25 mm ±2,5 mm, 32, 40 and 50 ±3 mm  
 All the codes reported in the chart refer to products in Big Cartons packaging, for the Small Carton's codes and information please contact our customer service.

**Self-adhesive**  
version available.  
Contact us  
for more  
information.

**1m length**  
available.  
Contact us  
for more  
information.

**K-FLEX® PE ▶ TUBES**
**Thickness 25 mm**
**COPPER PIPE**
**IRON PIPE**
**Length 2 metres**

External ∅ mm	Nom. ∅ DN	Inches	External ∅ mm	Nom. ∅ DN	Thick. (mm)	Diam. (mm)	Code	m/Ct.	Price €/m
22	20	1/2"	21,3	15	25	22	250222155PE0N0	72	2,80
28	25	3/4"	26,9	20	25	28	250282155PE0N0	66	3,14
35	32	1"	33,7	25	25	35	250352155PE0N0	54	3,59
42	40	1+1/4"	42,4	32	25	42	250422155PE0N0	46	4,03
		1+1/2"	48,3	40	25	48	250482155PE0N0	42	4,39
54	50		54		25	54	250542155PE0N0	38	4,75
		2"	60,3	50	25	60	250602155PE0N0	34	5,14
64			63,5		25	64	250642155PE0N0	32	5,38
76,1	65	2+1/2"	76,1	65	25	76	250762155PE0N0	26	6,18
88,9	80	3"	88,9	80	25	89	250892155PE0N0	20	7,12
					25	108	251082155PE0N0	14	8,71
114	100	4"	114,3	100	25	114	251142155PE0N0	12	9,19

Tolerance for K-FLEX® PE Tubes: Length: - 1,5%

Internal ∅: ≤ 35mm: from +1mm to +4mm, &gt;35mm/≤100mm: from +2mm to +6mm, &gt;100: from +3mm to +8mm

Thickness: 6 mm: ±1 mm, 9 and 13 mm ±1,5 mm, 19 and 25 mm ±2,5 mm, 32, 40 and 50 ±3 mm

All the codes reported in the chart refer to products in Big Cartons packaging, for the Small Carton's codes and information please contact our customer service.

**Self-adhesive**  
version available.  
Contact us  
for more  
information.

**1m length**  
available.  
Contact us  
for more  
information.



# K-FLEX® PE PLUS

## DESCRIPTION

**K-FLEX® PE PLUS** is an extruded polyethylene closed cell insulation tube with an improved fire classification rating. This product fulfils all the highest building standards in term of fire reaction.

## APPLICATIONS

**K-FLEX® PE PLUS** is ideal for heat insulation of pipelines of heating systems, cold and hot water supply, ventilation and air conditioning, and equipment.

## TECHNICAL DATA

K-FLEX® PE PLUS ▶ TECHNICAL DATA		
▼ Property ▼	▼ Value ▼	▼ Test method ▼
Temperature range	untill +100 °C	EN 14707
Thermal conductivity $\lambda$ W/(m•K)	+10 °C = 0,036 +40 °C = 0,040	EN ISO 8497
Corrosion prevention	ph Neutral (7±0,5)	
Fire rating	Euroclass B <sub>L</sub> -s1, d0	EN 13501-1
Ecological data	Without CFCs and HCFCs	
Density	30 (±7) kg/m <sup>3</sup>	

K-FLEX® reserves the right to change data and technical requirements without notice.



**K-FLEX® PE PLUS TUBES**
**Thickness 6 mm**

COPPER PIPE			IRON PIPE		Length 2 metres				
External Ø mm	Nom. Ø DN	Inches	External Ø mm	Nom. Ø DN	Thick. (mm)	Diam. (mm)	Code	m/Ct.	Price €/m
					6	12	060122155PEPNO	-	On request
14/15	10/-	1/4"	13,5	8	6	15	060152155PEPNO	440	0,30
18	15	3/8"	17,2	10	6	18	060182155PEPNO	400	0,34
22	20	1/2"	21,3	15	6	22	060222155PEPNO	320	0,40
					6	25	060252155PEPNO	244	0,46
28	25	3/4"	26,9	20	6	28	060282155PEPNO	240	0,50
35	32	1"	33,7	25	6	35	060352155PEPNO	160	0,63
42	40	1+1/4"	42,4	32	6	42	060422155PEPNO	140	0,73

**Thickness 9 mm**

COPPER PIPE			IRON PIPE		Length 2 metres				
External Ø mm	Nom. Ø DN	Inches	External Ø mm	Nom. Ø DN	Thick. (mm)	Diam. (mm)	Code	m/Ct.	Price €/m
14/15	10/-	1/4"	13,5	8	9	15	090152155PEPNO	356	0,52
18	15	3/8"	17,2	10	9	18	090182155PEPNO	284	0,60
22	20	1/2"	21,3	15	9	22	090222155PEPNO	240	0,65
					9	25	090252155PEPNO	200	0,76
28	25	3/4"	26,9	20	9	28	090282155PEPNO	168	0,85
35	32	1"	33,7	25	9	35	090352155PEPNO	136	0,92
42	40	1+1/4"	42,4	32	9	42	090422155PEPNO	110	1,18
					9	45	090452155PEPNO	94	1,28
		1+1/2"	48,3	40	9	48	090482155PEPNO	74	1,40
54	50		54		9	54	090542155PEPNO	70	1,54
		2"	60,3	50	9	60	090602155PEPNO	66	1,67
64			63,5		9	64	090642155PEPNO	60	1,79
76,1	65	2+1/2"	76,1	65	9	76	090762155PEPNO	48	2,11
88,9	80	3"	88,9	80	9	89	090892155PEPNO	40	2,46
					9	108	091082155PEPNO	26	3,16
114	100	4"	114,3	100	9	114	091142155PEPNO	26	3,23
133	125		133		9	133	091332155PEPNO	16	4,14
159	150		160		9	160	091602155PEPNO	12	5,13

Tolerance for K-FLEX® PE PLUS Tubes: Length: - 1,5%

Internal Ø: ≤ 35mm: from +1mm to +4mm, >35mm/≤100mm: from +2mm to +6mm, >100: from +3mm to +8mm

Thickness: 6 mm: ±1 mm, 9 and 13 mm ±1,5 mm, 19 and 25 mm ±2,5 mm, 32, 40 and 50 ±3 mm

All the codes reported in the chart refer to products in Big Cartons packaging, for the Small Carton's codes and information please contact our customer service.

**K-FLEX® PE PLUS ▶ TUBES**

**Thickness 13 mm**

COPPER PIPE			IRON PIPE		Length 2 metres				
External ∅ mm	Nom. ∅ DN	Inches	External ∅ mm	Nom. ∅ DN	Thick. (mm)	Diam. (mm)	Code	m/Ct.	Price €/m
14/15	10/-	1/4"	13,5	8	13	15	130152155PEPNO	240	0,96
18	15	3/8"	17,2	10	13	18	130182155PEPNO	200	1,06
22	20	1/2"	21,3	15	13	22	130222155PEPNO	168	1,21
					13	25	130252155PEPNO	140	1,32
28	25	3/4"	26,9	20	13	28	130282155PEPNO	132	1,43
35	32	1"	33,7	25	13	35	130352155PEPNO	108	1,69
42	40	1+1/4"	42,4	32	13	42	130422155PEPNO	80	2,04
					13	45	130452155PEPNO	72	2,17
		1+1/2"	48,3	40	13	48	130482155PEPNO	70	2,28
54	50		54		13	54	130542155PEPNO	66	2,49
		2"	60,3	50	13	60	130602155PEPNO	48	2,82
64			63,5		13	64	130642155PEPNO	48	2,95
76,1	65	2+1/2"	76,1	65	13	76	130762155PEPNO	40	3,43
88,9	80	3"	88,9	80	13	89	130892155PEPNO	30	4,05
					13	108	131082155PEPNO	22	5,00
114	100	4"	114,3	100	13	114	131142155PEPNO	22	5,14
133	125		133		13	133	131332155PEPNO	16	6,16
159	150		160		13	160	131602155PEPNO	12	7,54

**Thickness 20 mm**

COPPER PIPE			IRON PIPE		Length 2 metres				
External ∅ mm	Nom. ∅ DN	Inches	External ∅ mm	Nom. ∅ DN	Thick. (mm)	Diam. (mm)	Code	m/Ct.	Price €/m
22	20	1/2"	21,3	15	20	22	200222155PEPNO	108	2,08
					20	25	200252155PEPNO	100	2,23
28	25	3/4"	26,9	20	20	28	200282155PEPNO	88	2,40
35	32	1"	33,7	25	20	35	200352155PEPNO	70	2,78
42	40	1+1/4"	42,4	32	20	42	200422155PEPNO	60	3,15
					20	45	200452155PEPNO	50	3,34
		1+1/2"	48,3	40	20	48	200482155PEPNO	48	3,51
54	50		54		20	54	200542155PEPNO	48	3,78
		2"	60,3	50	20	60	200602155PEPNO	40	4,15
64			63,5		20	64	200642155PEPNO	38	4,35
76,1	65	2+1/2"	76,1	65	20	76	200762155PEPNO	26	5,17
88,9	80	3"	88,9	80	20	89	200892155PEPNO	24	5,82
					20	108	201082155PEPNO	14	7,44
114	100	4"	114,3	100	20	114	201142155PEPNO	14	7,63
133	125		133		20	133	201332155PEPNO	12	8,73
159	150		160		20	160	201602155PEPNO	12	9,92

Tolerance for K-FLEX® PE PLUS Tubes: Length: - 1,5%

Internal Ø: ≤ 35mm: from +1mm to +4mm, >35mm/≤100mm: from +2mm to +6mm, >100: from +3mm to +8mm

Thickness: 6 mm: ±1 mm, 9 and 13 mm ±1,5 mm, 19 and 25 mm ±2,5 mm, 32, 40 and 50 ±3 mm

All the codes reported in the chart refer to products in Big Cartons packaging, for the Small Carton's codes and information please contact our customer service.



**K-FLEX® PE PLUS ▸ TUBES**
**Thickness 25 mm**
**COPPER PIPE**
**IRON PIPE**
**Length 2 metres**

External ∅ mm	Nom. ∅ DN	Inches	External ∅ mm	Nom. ∅ DN	Thick. (mm)	Diam. (mm)	Code	m/Ct.	Price €/m
22	20	1/2"	21,3	15	25	22	250222155PEPNO	72	3,30
28	25	3/4"	26,9	20	25	28	250282155PEPNO	66	3,71
35	32	1"	33,7	25	25	35	250352155PEPNO	54	4,23
42	40	1+1/4"	42,4	32	25	42	250422155PEPNO	46	4,76
		1+1/2"	48,3	40	25	48	250482155PEPNO	42	5,18
54	50		54		25	54	250542155PEPNO	38	5,61
		2"	60,3	50	25	60	250602155PEPNO	34	6,06
64			63,5		25	64	250642155PEPNO	32	6,35
76,1	65	2+1/2"	76,1	65	25	76	250762155PEPNO	26	7,29
88,9	80	3"	88,9	80	25	89	250892155PEPNO	20	8,40
					25	108	251082155PEPNO	14	10,28
114	100	4"	114,3	100	25	114	251142155PEPNO	12	10,84

Tolerance for K-FLEX® PE PLUS Tubes: Length: - 1,5%

Internal Ø: ≤ 35mm: from +1mm to +4mm, &gt;35mm/≤100mm: from +2mm to +6mm, &gt;100: from +3mm to +8mm

Thickness: 6 mm: ±1 mm, 9 and 13 mm ±1,5 mm, 19 and 25 mm ±2,5 mm, 32, 40 and 50 ±3 mm

All the codes reported in the chart refer to products in Big Cartons packaging, for the Small Carton's codes and information please contact our customer service.



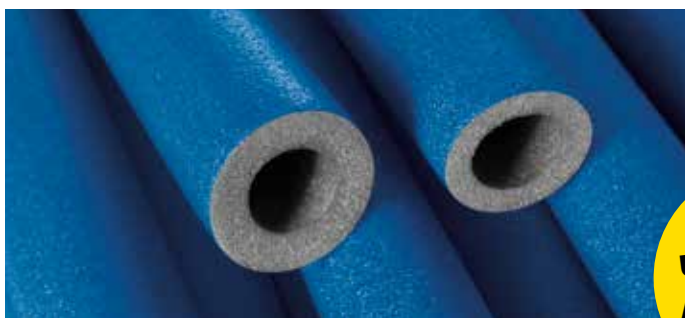
# K-FLEX® PE COLOR

## DESCRIPTION

**K-FLEX® PE COLOR** is a coextruded polyethylene closed cell insulation tube, available in different diameters and thickness, specifically designed for all that applications where an additional mechanical protection is required.

## APPLICATIONS

**K-FLEX® PE COLOR** is ideal for heat insulation of pipelines of heating systems, cold and hot water supply, ventilation and air conditioning, equipment and underfloor applications.



**Underfloor  
Application**

**Available in  
coils**

## TECHNICAL DATA

### K-FLEX® PE COLOR ► TECHNICAL DATA

▼ Property ▼	▼ Value ▼	▼ Test method ▼
Temperature range	untill +100 °C	EN 14707
Thermal conductivity $\lambda$ W/(m•K)	+10 °C = 0,036 +40 °C = 0,040	EN ISO 8497
Corrosion prevention	ph Neutral (7±0,5)	
Fire rating	Euroclass D <sub>L</sub> -s1, d0	EN 13501-1
Ecological data	Without CFCs and HCFCs	
Density	30 (±7) kg/m <sup>3</sup>	

K-FLEX® reserves the right to change data and technical requirements without notice.



**K-FLEX® PE COLOR TUBES**
**Thickness 6 mm**

COPPER PIPE			IRON PIPE			Length 2 metres			
External Ø mm	Nom. Ø DN	Inches	External Ø mm	Nom. Ø DN	Thick. (mm)	Diam. (mm)	Code	m/Ct.	Price €/m
					6	12	060122118PEOCR	-	0,41
14/15	10/-	1/4"	13,5	8	6	15	060152118PEOCR	200	0,45
18	15	3/8"	17,2	10	6	18	060182118PEOCR	180	0,50
					6	20	060202118PEOCR	-	0,52
22	20	1/2"	21,3	15	6	22	060222118PEOCR	152	0,56
					6	25	060252118PEOCR	-	0,62
28	25	3/4"	26,9	20	6	28	060282118PEOCR	118	0,65
35	32	1"	33,7	25	6	35	060352118PEOCR	80	0,79
42	40	1+1/4"	42,4	32	6	42	060422118PEOCR	70	On request

**Thickness 9 mm**

COPPER PIPE			IRON PIPE			Length 2 metres			
External Ø mm	Nom. Ø DN	Inches	External Ø mm	Nom. Ø DN	Thick. (mm)	Diam. (mm)	Code	m/Ct.	Price €/m
14/15	10/-	1/4"	13,5	8	9	15	090152118PEOCR	140	0,69
18	15	3/8"	17,2	10	9	18	090182118PEOCR	120	0,78
22	20	1/2"	21,3	15	9	22	090222118PEOCR	100	0,88
28	25	3/4"	26,9	20	9	28	090282118PEOCR	88	1,02
35	32	1"	33,7	25	9	35	090352118PEOCR	60	1,25
42	40	1+1/4"	42,4	32	9	42	090422118PEOCR	48	1,46

**Thickness 13 mm**

COPPER PIPE			IRON PIPE			Length 2 metres			
External Ø mm	Nom. Ø DN	Inches	External Ø mm	Nom. Ø DN	Thick. (mm)	Diam. (mm)	Code	m/Ct.	Price €/m
14/15	10/-	1/4"	13,5	8	13	15	130152118PEOCR	120	1,22
18	15	3/8"	17,2	10	13	18	130182118PEOCR	96	1,36
22	20	1/2"	21,3	15	13	22	130222118PEOCR	80	1,54
28	25	3/4"	26,9	20	13	28	130282118PEOCR	64	1,80
35	32	1"	33,7	25	13	35	130352118PEOCR	48	2,10
42	40	1+1/4"	42,4	32	13	42	130422118PEOCR	40	2,45

**Thickness 20 mm**

COPPER PIPE			IRON PIPE			Length 2 metres			
External Ø mm	Nom. Ø DN	Inches	External Ø mm	Nom. Ø DN	Thick. (mm)	Diam. (mm)	Code	m/Ct.	Price €/m
14/15	10/-	1/4"	13,5	8	20	15	200152118PEOCR	60	2,24
18	15	3/8"	17,2	10	20	18	200182118PEOCR	54	2,48
22	20	1/2"	21,3	15	20	22	200222118PEOCR	52	2,79
28	25	3/4"	26,9	20	20	28	200282118PEOCR	40	3,26
35	32	1"	33,7	25	20	35	200352118PEOCR	38	3,85
42	40	1+1/4"	42,4	32	20	42	200422118PEOCR	30	4,46

**Thickness 25 mm**

COPPER PIPE			IRON PIPE			Length 2 metres			
External Ø mm	Nom. Ø DN	Inches	External Ø mm	Nom. Ø DN	Thick. (mm)	Diam. (mm)	Code	m/Ct.	Price €/m
14/15	10/-	1/4"	13,5	8	25	15	250152118PEOCR	40	On request
18	15	3/8"	17,2	10	25	18	250182118PEOCR	38	On request
22	20	1/2"	21,3	15	25	22	250222118PEOCR	36	On request
28	25	3/4"	26,9	20	25	28	250282118PEOCR	30	On request
35	32	1"	33,7	25	25	35	250352118PEOCR	26	On request
42	40	1+1/4"	42,4	32	25	42	250422118PEOCR	24	On request

Tolerance for K-FLEX® PE Tubes: Length: - 1,5% - Internal Ø: ≤ 350 mm: from +10 mm to +40 mm, >350 mm/≤1000 mm: from +20 mm to +60 mm, >1000 mm: from +30 mm to +80 mm

Thickness: 6 Ø mm: ±1 Ø mm, 9 and 13 Ø mm ±1,5 Ø mm, 19 and 25 Ø mm ±2,5 Ø mm, 32, 40 and 50 ±3 Ø mm

For the blue version change the last letter to B (example: 090182118PEOCR => 090182118PEOCB)

All the codes reported in the chart refer to products in Small Cartons packaging, for the Big Carton's codes and information please contact our customer service.



# K-FLEX® PE PLUS COLOR

## DESCRIPTION

**K-FLEX® PE PLUS COLOR** is a coextruded polyethylene closed cell insulation tube with an improved fire classification rating, available in different diameters and thickness, specifically designed for all that applications where an additional mechanical protection is required. This product fulfils all the highest building standards in term of fire reaction.

## APPLICATIONS

**K-FLEX® PE PLUS COLOR** is ideal for heat insulation of pipelines of heating systems, cold and hot water supply, ventilation and air conditioning, equipment and underfloor applications.



## TECHNICAL DATA

K-FLEX® PE PLUS COLOR ▶ TECHNICAL DATA		
Property ▼	Value ▼	Test method ▼
Temperature range	untill +100 °C	EN 14707
Thermal conductivity $\lambda$ W/(m•K)	+10 °C = 0,036 +40 °C = 0,040	EN ISO 8497
Corrosion prevention	ph Neutral (7±0,5)	
Fire rating	Euroclass B <sub>L</sub> -s1, d0	EN 13501-1
Ecological data	Without CFCs and HCFCs	
Density	30 (±7) kg/m <sup>3</sup>	

K-FLEX® reserves the right to change data and technical requirements without notice.



**K-FLEX® PE PLUS COLOR ▸ TUBES**
**Thickness 6 mm**

COPPER PIPE			IRON PIPE			Length 2 metres			
External ∅ mm	Nom. ∅ DN	Inches	External ∅ mm	Nom. ∅ DN	Thick. (mm)	Diam. (mm)	Code	m/Ct.	Price €/m
					6	12	060122118PEPCR	-	0,48
14/15	10/-	1/4"	13,5	8	6	15	060152118PEPCR	200	0,53
18	15	3/8"	17,2	10	6	18	060182118PEPCR	180	0,59
					6	20	060202118PEPCR	-	0,62
22	20	1/2"	21,3	15	6	22	060222118PEPCR	152	0,66
					6	25	060252118PEPCR	-	0,73
28	25	3/4"	26,9	20	6	28	060282118PEPCR	120	0,77
35	32	1"	33,7	25	6	35	060352118PEPCR	80	0,93
42	40	1+1/4"	42,4	32	6	42	060422118PEPCR	70	On request

**Thickness 9 mm**

COPPER PIPE			IRON PIPE			Length 2 metres			
External ∅ mm	Nom. ∅ DN	Inches	External ∅ mm	Nom. ∅ DN	Thick. (mm)	Diam. (mm)	Code	m/Ct.	Price €/m
14/15	10/-	1/4"	13,5	8	9	15	090152118PEPCR	140	0,82
18	15	3/8"	17,2	10	9	18	090182118PEPCR	120	0,93
22	20	1/2"	21,3	15	9	22	090222118PEPCR	100	1,04
28	25	3/4"	26,9	20	9	28	090282118PEPCR	88	1,20
35	32	1"	33,7	25	9	35	090352118PEPCR	60	1,47
42	40	1+1/4"	42,4	32	9	42	090422118PEPCR	48	1,72

**Thickness 13 mm**

COPPER PIPE			IRON PIPE			Length 2 metres			
External ∅ mm	Nom. ∅ DN	Inches	External ∅ mm	Nom. ∅ DN	Thick. (mm)	Diam. (mm)	Code	m/Ct.	Price €/m
14/15	10/-	1/4"	13,5	8	13	15	130152118PEPCR	120	1,44
18	15	3/8"	17,2	10	13	18	130182118PEPCR	96	1,60
22	20	1/2"	21,3	15	13	22	130222118PEPCR	80	1,81
28	25	3/4"	26,9	20	13	28	130282118PEPCR	64	2,12
35	32	1"	33,7	25	13	35	130352118PEPCR	48	2,48
42	40	1+1/4"	42,4	32	13	42	130422118PEPCR	40	2,89

**Thickness 20 mm**

COPPER PIPE			IRON PIPE			Length 2 metres			
External ∅ mm	Nom. ∅ DN	Inches	External ∅ mm	Nom. ∅ DN	Thick. (mm)	Diam. (mm)	Code	m/Ct.	Price €/m
14/15	10/-	1/4"	13,5	8	20	15	200152118PEPCR	60	2,65
18	15	3/8"	17,2	10	20	18	200182118PEPCR	54	2,93
22	20	1/2"	21,3	15	20	22	200222118PEPCR	52	3,29
28	25	3/4"	26,9	20	20	28	200282118PEPCR	40	3,85
35	32	1"	33,7	25	20	35	200352118PEPCR	38	4,55
42	40	1+1/4"	42,4	32	20	42	200422118PEPCR	30	5,26

**Thickness 25 mm**

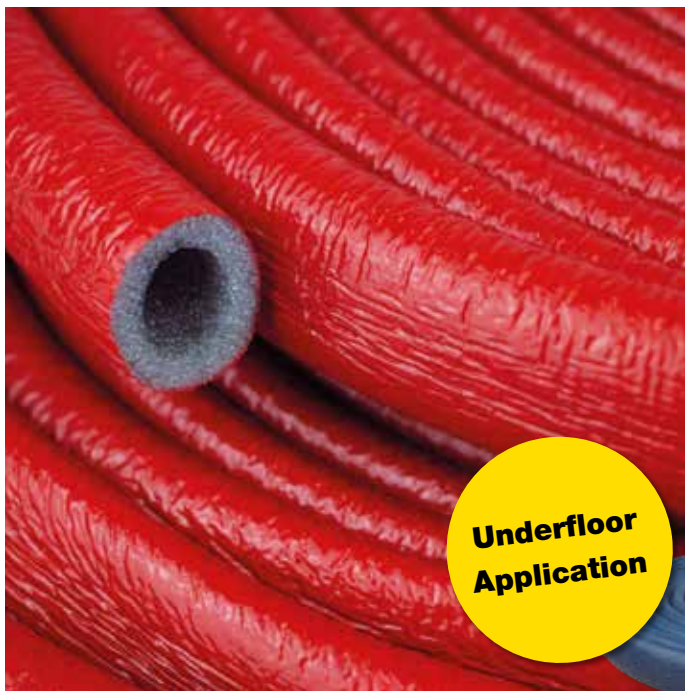
COPPER PIPE			IRON PIPE			Length 2 metres			
External ∅ mm	Nom. ∅ DN	Inches	External ∅ mm	Nom. ∅ DN	Thick. (mm)	Diam. (mm)	Code	m/Ct.	Price €/m
14/15	10/-	1/4"	13,5	8	25	15	250152118PEPCR	40	On request
18	15	3/8"	17,2	10	25	18	250182118PEPCR	38	On request
22	20	1/2"	21,3	15	25	22	250222118PEPCR	36	On request
28	25	3/4"	26,9	20	25	28	250282118PEPCR	30	On request
35	32	1"	33,7	25	25	35	250352118PEPCR	26	On request
42	40	1+1/4"	42,4	32	25	42	250422118PEPCR	24	On request

Tolerance for K-FLEX® PE Tubes: Length: - 1,5% - Internal Ø: ≤ 350 mm: from +10 mm to +40 mm, >350 mm/≤1000 mm: from +20 mm to +60 mm, >1000 mm: from +30 mm to +80 mm

Thickness: 6 Ø mm: ±1 Ø mm, 9 and 13 Ø mm ±1,5 Ø mm, 19 and 25 Ø mm ±2,5 Ø mm, 32, 40 and 50 ±3 Ø mm

For the blue version change the last letter to B (example: 090182118PEPCR ⇒ 090182118PEPCB)

All the codes reported in the chart refer to products in Small Cartons packaging, for the Big Carton's codes and information please contact our customer service.



# K-FLEX® PE COLOR - COILS

## DESCRIPTION

**K-FLEX® PE COLOR** is a coextruded polyethylene closed cell insulation tube, available in different diameters and thickness, specifically designed for all that applications where an additional mechanical protection is required.

## APPLICATIONS

**K-FLEX® PE COLOR** is ideal for heat insulation of pipelines of heating systems, cold and hot water supply, ventilation and air conditioning, equipment and underfloor applications.



## TECHNICAL DATA

K-FLEX® PE COLOR ▶ TECHNICAL DATA		
Property ▼	Value ▼	Test method ▼
Temperature range	untill +100 °C	EN 14707
Thermal conductivity $\lambda$ W/(m•K)	+10 °C = 0,036 +40 °C = 0,040	EN ISO 8497
Corrosion prevention	ph Neutral (7±0,5)	
Fire rating	Euroclass D <sub>L</sub> -s1, d0	EN 13501-1
Ecological data	Without CFCs and HCFCs	
Density	30 (±7) kg/m <sup>3</sup>	

K-FLEX® reserves the right to change data and technical requirements without notice.



**K-FLEX® PE COLOR ▸ TUBES IN COIL**
**Thickness 4 mm**

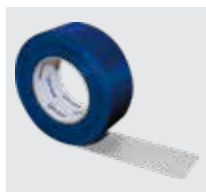
COPPER PIPE			IRON PIPE		Length 10 metres				
External ∅ mm	Nom. ∅ DN	Inches	External ∅ mm	Nom. ∅ DN	Thick. (mm)	Diam. (mm)	Code	m/Ct.	Price €/m
14/15	10/-	1/4"	13,5	8	4	15	040152103PEOCR	280	On request
18	15	3/8"	17,2	10	4	18	040182103PEOCR	250	On request
22	20	1/2"	21,3	15	4	22	040222103PEOCR	220	On request
28	25	3/4"	26,9	20	4	28	040282103PEOCR	180	On request
35	32	1"	33,7	25	4	35	040352103PEOCR	150	On request

**Thickness 6 mm**

COPPER PIPE			IRON PIPE		Length 10 metres				
External ∅ mm	Nom. ∅ DN	Inches	External ∅ mm	Nom. ∅ DN	Thick. (mm)	Diam. (mm)	Code	m/Ct.	Price €/m
14/15	10/-	1/4"	13,5	8	6	15	060152103PEOCR	280	On request
18	15	3/8"	17,2	10	6	18	060182103PEOCR	250	On request
22	20	1/2"	21,3	15	6	22	060222103PEOCR	220	On request
28	25	3/4"	26,9	20	6	28	060282103PEOCR	180	On request
35	32	1"	33,7	25	6	35	060352103PEOCR	150	On request

Tolerance for K-FLEX® PE Tubes: Length: - 1,5% - Internal ∅: ≤ 350 mm: from +10 mm to +40 mm, >350 mm/≤1000 mm: from +20 mm to +60 mm, >100: from +30 mm to +80 mm  
 Thickness: 6 ∅ mm: ±1 ∅ mm, 9 and 13 ∅ mm ±1,5 ∅ mm, 19 and 25 ∅ mm ±2,5 ∅ mm, 32, 40 and 50 ±3 ∅ mm  
 For the blue version change the last letter to B (example: 060152103PEOCR => 060152103PEOCB)

## K-FLEX® ACCESSORIES



### K-FLEX® CLOTH DUCT TAPE

High Quality PE Duct Tape, adopts high grade fabric cloth with color polyethylene covering, coats improved synthetic rubberresin adhesive coated. It enjoys fast stick, straight and smooth tear, good tensile strength, excellent moisture resistant. It conforms well to irregular surface. It is a good choice for bundling, heavy carton packing, general maintenance, pipe wrapping, carpet fixing, air-conditioning duct's seam and joint sealing etc.

K-FLEX® K 420 glue have been specifically designed for use with K-FLEX® insulation material. The securely bonded surfaces and joints are resistant to ageing and atmospheric agents, and preserve the technical characteristics of the insulating material

K-FLEX® GLUE DISPENSER  
A useful accessory that controls flow and helps spread adhesives evenly on insulation surfaces, avoiding having to continuously dip the brush into the tin of adhesive. The adhesive correctly diluted, is manually pumped through the brush.

K-FLEX® TAPES ▶ CLOTH DUCT								
K-FLEX® CLOTH DUCT 1604H TAPE								
Color	Mesh	Thickness	Width (mm)	Length (m)	Code	Quantity/Ct	Availability	Price €/Item
Grey	35	160 Micron	50	50	85NDAL50050164S	24 rolls	Ex stock	8,26
Grey	35	160 Micron	75	50	85NDAL75050164S	16 rolls	On request	14,89
Grey	35	160 Micron	100	50	85NDALA0050164S	12 rolls	On request	19,81
Red	35	160 Micron	50	50	85NDAL50050164R	24 rolls	On request	8,26
Blue	35	160 Micron	50	50	85NDAL50050164B	24 rolls	On request	8,26

For products "On request" delivery 10 days.

K-FLEX® ACCESSORIES ▶ ADHESIVE DISPENSER		
Description	Code	Price €/Item
Adhesive Applicator	850VR020060	109,81

K-FLEX® ACCESSORIES ▶ ADHESIVE K 420			
I/Can	Quantity/Ctn	Code	Price €/Item
0,25 + brush	24 cans	850CL020039	14,36
1	20 cans	850CLK4201000	22,29
2,6	6 cans	850CL020038	42,04



## PACKAGING

PRODUCTS	CARTON DIMENSIONS (MM)			CARTONS/ PALLET	PALLET DIMENSIONS (MM)		
	LENGTH	WIDTH	HEIGHT	QUANTITY	LENGTH	WIDTH	HEIGHT
K-FLEX® PE	2075	385	320	18	2100	1180	2095
	2075	590	390	10	2100	1180	2085
K-FLEX® PE PLUS	2075	385	320	18	2100	1180	2095
	2075	590	390	10	2100	1180	2085
K-FLEX® PE COLOR	2075	385	320	18	2100	1180	2095
	2075	590	390	10	2100	1180	2085
	1050	550	550	16	2100	1180	2085
K-FLEX® PE PLUS COLOR	2075	385	320	18	2100	1180	2095
	2075	590	390	10	2100	1180	2085



### BIG CARTON

590 x 390 x 2075 mm



### SMALL CARTON

385 x 320 x 2075 mm



### COIL PACKAGING

1050 x 550 x 550 mm



## CONTACT

### L'ISOLANTE K-FLEX S.p.A.

Via Don Locatelli, 35 - 20877 Roncello (MB) - Italy

Sales Dept.

E-mail: [internationalsales@kflex.com](mailto:internationalsales@kflex.com)

Tel.: +39 039 6824.1

Technical Marketing Dept.

E-mail: [kflex-technical@kflex.com](mailto:kflex-technical@kflex.com)

[www.kflex.com](http://www.kflex.com)

# 2019